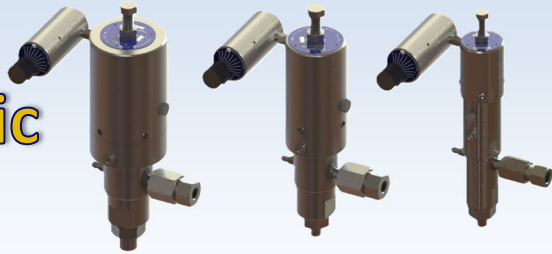


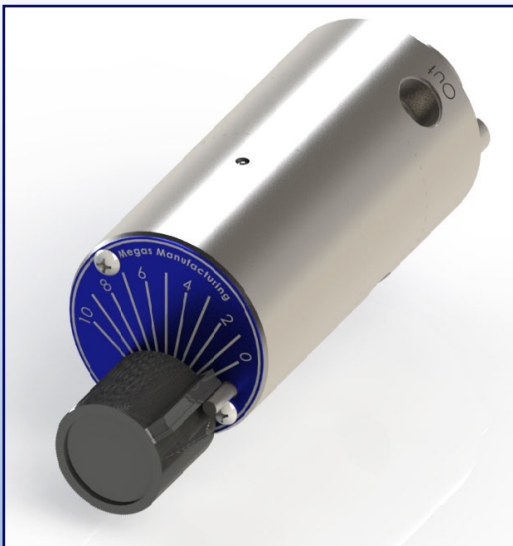
Pneumatic Pumps



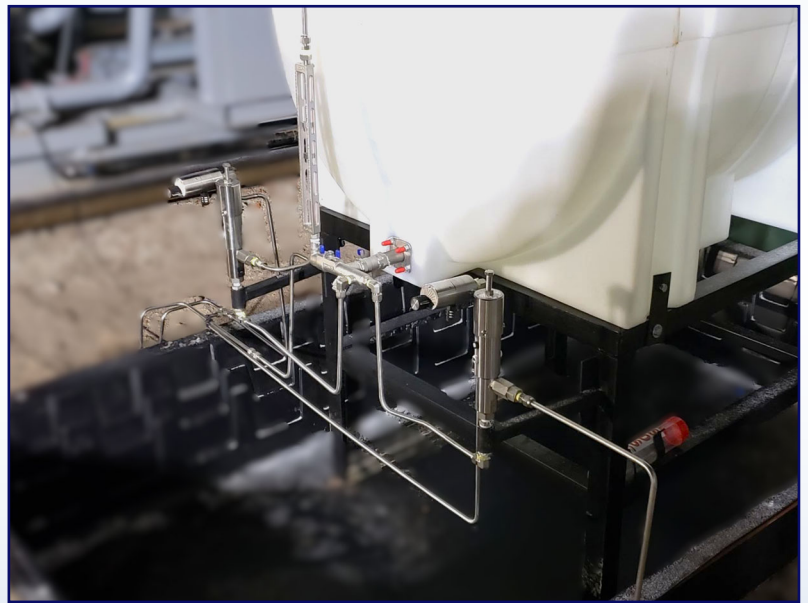
Megas Pneumatic Pumps are precisely engineered with simplicity in mind. Our products are trusted hardware that offers versatility to chemical injection applications. We build our business on relationships and seek to solve technical challenges with you. Our staff is knowledgeable, answers are timely, and solutions are deployed quickly. Most importantly, we ensure that your downtime is minimal. Trust Megas Manufacturing to fulfill all your chemical metering needs and get the job done!

Features:

- Simplistic, modular design
- Minimum cycling of 3 strokes per minute
- Sealed lubrication chamber
- Engineered, coated springs
- Dual seals in P24 and P38
- Exhaust can be vented away from controllers



Megas MT-250 Pneumatic Controller



Megas Pneumatic Timers and Pumps on skid

Benefits:

- Field repairs made easy
- Easy installation and retrofit
- Ultra-low minimum flow rates
- Longer spring and seal life
- Ensures concentric stroke and longer life

Operating Specifications by Pump

Model	P14	P24	P38
Max Discharge* (PSI)	4,500	10,500	4,500
Max Flow (Quarts/Day)	85	62	245
Min Flow (Quarts/Day)	0.75	1.25	5
Supply : Discharge Ratio	1:31	1:75	1:33
Max Strokes/Minute	70	50	50
*150 PSI Supply			

Gas Emissions per Stroke (SCF)

Supply Pressure	P14	P24	P38
20 PSI	0.0024	0.0054	0.0097
30 PSI	0.0031	0.007	0.0124
40 PSI	0.0038	0.0086	0.0152
50 PSI	0.0045	0.0101	0.018
60 PSI	0.0052	0.0117	0.0208
70 PSI	0.0059	0.0133	0.0236
80 PSI	0.0066	0.0148	0.0264

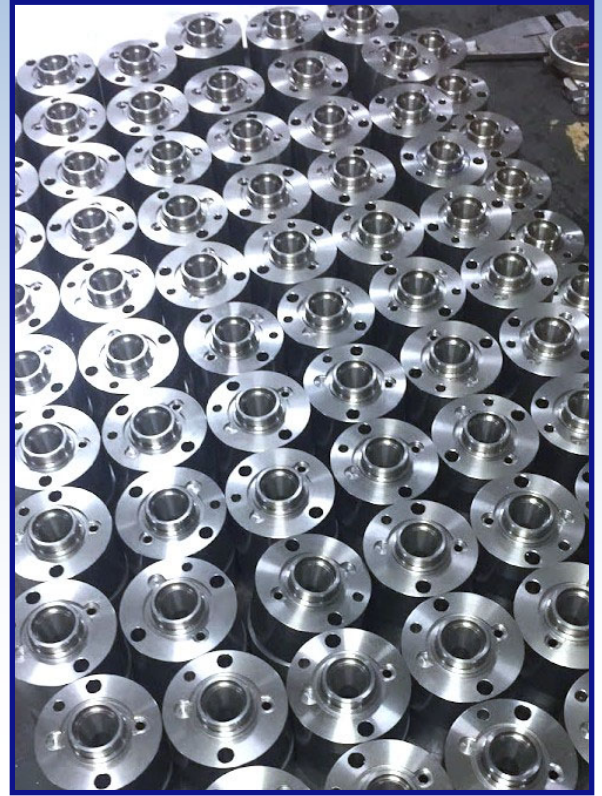
Supply Pressure	P14	P24	P38
90 PSI	0.0073	0.0164	0.0291
100 PSI	0.008	0.018	0.0319
110 PSI	0.0087	0.0195	0.0347
120 PSI	0.0094	0.0211	0.0375
130 PSI	0.0101	0.0226	0.0403
140 PSI	0.0108	0.0242	0.043
150 PSI	0.0115	0.0258	0.0458



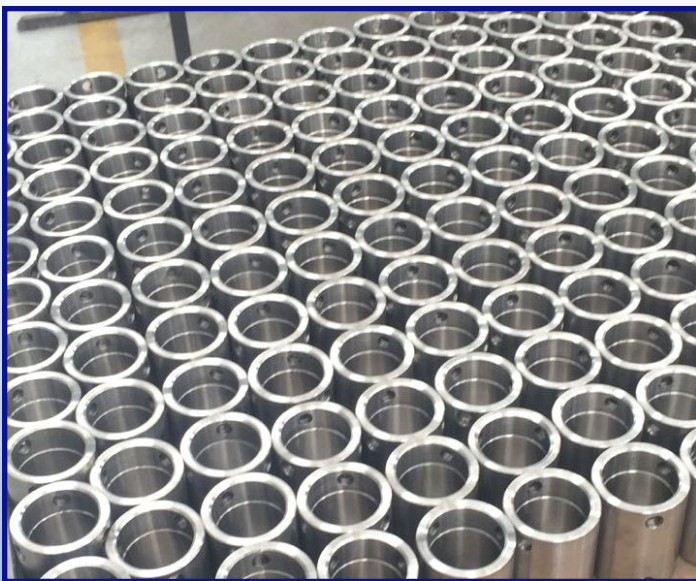
Materials of Construction

Hard Goods:

- Wetted parts: 316 Stainless Steel
- Plunger: 17-4 SST
 - (Ceramic coatings available)
- Piston: 303 SST
- Piston Housing: 303 SST
- Timer Body: 303 SST
- Check Balls: 316 SST or carbide



Pneumatic pump timers in 303 SST



Timer body in 303 SST

Soft Goods:

- Seals: Carbon Graphite TFE, ETP, UHMWPE, or FFKM
- O-rings: Viton, Buna, and FFKM
- Check Seats: TFE
- U Cup: Lubrithane



How to Order

Pneumatic Pump Sample Code:

<u>1</u>	-	<u>2</u>	-	<u>3</u>	<u>4</u>	<u>5</u>
P14	-	SS	-	E	V	T

In the above example, an **1.5" x 1/4", Stainless Steel, ETP, Viton, TFE** unit has been ordered.

1	<u>Piston size x Plunger Size</u>	<u>Code</u>
	1.5" x 1/4"	P14
	2.25 "x 1/4"	P24
	3 "x 1/2"	P38
2	<u>Plunger Material</u>	<u>Code</u>
	17-4 SST	SS
	Ceramic Coated	CC
3	<u>Seal Material</u>	<u>Code</u>
	ETP	E
	UHMWPE	U
	FFKM	F
	Carbon/Graphite/TFE	Q
4	<u>O-Ring Material</u>	<u>Code</u>
	Viton	V
	Buna	B
	FFKM	F
5	<u>Check Seat Material</u>	<u>Code</u>
	TFE/TFE	T

